



PENSIONERS' EDITION



ULEZ SCRAPPAGE SCHEME EXPANDED TO ALL LONDONERS

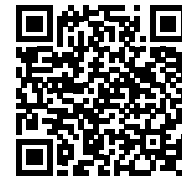
In the March edition of otm PE, we included a Gearing up for ULEZ article, with advice on how to check whether your car is compliant, and what you might have to pay when driving through the zone if it's not. Since then, the Mayor of London has announced major changes to the scrappage scheme for the Ultra Low Emission Zone (ULEZ).

Eligibility for the scheme has significantly widened and grants have been increased for vans, minibuses, wheelchair accessible vehicles and retrofits. Scrappage grants of up to £2,000 are also

available to every Londoner with a ULEZ non-compliant car.

The ULEZ continues to clean London's air and make our people healthier. Make sure you know what the changes mean for you.

Find out more by heading to tfl.gov.uk/modes/driving/ultra-low-emission-zone or, if you've got a smartphone, scan the QR code.



NIGHT RIDER 110 years of the night bus



Then ©TfL the London Transport Museum collection)

In the summer of 1913, the 94 set off on its maiden journey with just 24 passengers on board. In those days, its purpose was to connect north west and central London during the wee small hours.

It trundled between Kilburn, Maida Vale, Oxford Street, Haymarket,

Trafalgar Square, Strand, Fleet Street, Moorgate, London Wall and Bank. According to records, the first bus in each direction would leave at 00:40 (when the day service ended) and would set off in 20-minute intervals until regular services resumed the next morning.

With virtually no other transport links available, the night bus was a welcome addition for many, including shift workers, postmen, musicians and market traders.

While the 94's route has changed somewhat, it still offers a ride home (to west London) throughout the night.

Share your night bus memories
✉ otmpensioners@tfl.gov.uk



And now...

FROM JAMAICA TO LONDON AND BACK AGAIN



Back in 1959, with the promise of a new life in the 'motherland', 19-year-old Setta Nembhard embarked

on her London adventure.

We caught up with TfL pensioner Setta during her first trip to the UK since the pandemic made all but essential travel impossible.

"London was very different from the Jamaica I'd left behind – and I was so excited to be here. I can still remember the trip we made to Hyde Park Corner during my first few days here; it was so impressive!"

After a couple of years working in a factory, a job advert piqued her interest and, before she knew it, Setta – affectionately nicknamed

'Betty' back then – was cooking for London Underground's staff at its (then) 55 Broadway headquarters.

Two years later, Setta had transferred to the Underground – somewhere she stayed for 30+ years – beginning her journey as a 'Relief' ticket collector on the Hammersmith group.

"Living in south east London, it was quite hard getting to work, but there were no excuses; you had to be on time!"

Thankfully, it wasn't long until Setta transferred to the Northern line, something that made her journeys easier. Despite the conditions back then – £11 per week, "delivered every Friday afternoon, in cash" and one rest day a month, Setta spent 17 years at Stockwell station.

"It was a lovely place to work, and everyone was friendly – they knew me, and I knew them!"

Due to an injury sustained in a road accident – and subsequent medical retirement – Setta and her husband of 62 years made the decision to return to Jamaica, where they now live under the warm Caribbean sun.

On whether she made the right decision at 19: "Thank God I came to this country – I have no stone to throw behind me."



Hammersmith station 1965
©TfL from London Transport Museum collection

This fun take on a classic is a great addition to your board game collection!

This special edition, beautifully designed SCRABBLE™ set – produced in partnership with London Transport Museum – celebrates the world's most favourite word game and the world's most recognisable font, the Johnston typecase.

After more than 100 years in use on the capital's transport system, this famous lettering can truly be described as 'London's handwriting'.

Packaged in a quality embossed storage tin, the set includes a folding gameboard, printed wooden tiles, wooden racks, a cloth bag for tiles, and those all-important rules.

Available to purchase exclusively at the London Transport Museum shop or online.

Otm PE readers qualify for 20 per cent* off online at ltmuseumshop.co.uk with the discount code **RETIREDSTAFF**. If you fancy a trip to the Museum in Covent Garden, bring a copy of the magazine with you and your discount will be applied at the till.

*Cannot be used in conjunction with any other offers or discounts.



A LOCO WITH PRIDE



Seeing a battery loco trundling through a London Underground (LU) station while you're on the platform is a little out of the norm, but you can't fail to be impressed by their 'muscle' and stature. Many an enthusiast will scour through endless data in pursuit of the perfect loco photo opportunity...

Thanks to Ruislip-based LU Train Maintainer **James Northcott**, there's a sight for sore eyes when it comes to one loco in particular: L51.

Built in 1973 – and thanks to James' tenacity and passion for the project – L51 got a Pride makeover, and it caused quite a stir.

Funded by supplier Hayley Rail, James' idea to wrap the loco took just two months from concept to delivery, and he couldn't be happier with the outcome: "While one loco wrapped in Pride livery isn't going to change the world, or even society, if one person who sees it rolling into a station or worksite can relate to it – or starts to ask positive questions – it will have all been worth it."



Travel Insurance with No Age Limits!

Peace of mind for your next holiday

✓ Experts in Cover for Medical Conditions

If you've ever had trouble getting cover for your medical conditions we can help!

✓ 24 Hour Medical Emergency Support

✓ Cover for Cruise Holidays

Call us FREE for an instant quote - It's easy!

0808 196 2121

Our friendly team are waiting to help you

SPECIAL OFFER FOR
ON THE MOVE READERS

10% OFF

BASE PREMIUM
Quote code OTM10



goodtogoinsurance.com



Goodtogoinsurance.com is a trading name of Ancile Insurance Group Limited. Authorised & Regulated by the Financial Conduct Authority - No. 471641.
*Discount applies to base premium only and not to any medical screening premiums or optional extras. Discount valid until 31 December 2023

MILESTONE MOMENT AS 1,000 BUSES GO GREEN

In August, TfL marked a huge milestone as they celebrated reaching over 1,000 zero-emission buses on their fleet. This means that more than one in ten of their iconic red buses have now gone 'green'.

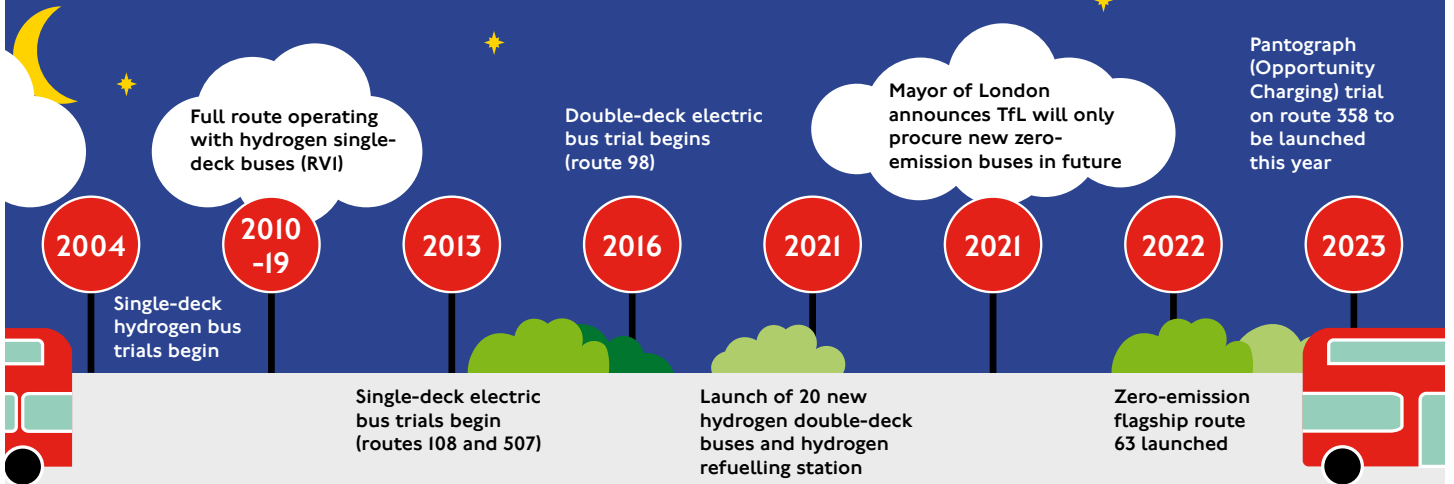
London's buses have the lowest CO2 emissions per passenger kilometres compared to other global cities such as New York, Sydney, Paris or Vancouver. Since 2021, all new vehicles joining TfL's fleet have been zero-emission, making theirs the largest electric bus fleet in western Europe.



Were you on the buses? Share your stories, memories and photos with us to be in with a chance of winning a prize. ✉ otmpensioners@tfl.gov.uk

TFL'S ELECTRIC JOURNEY

From the slick new customer features on fully electric route 63 (dubbed the 'boujee bus' on TikTok), to the new pantograph-powered bus on route 132 in Bexleyheath, TfL's teams have been at the forefront of trialling and rolling out zero-emission buses since the early 2000s. Take a look at some of their electric highlights:



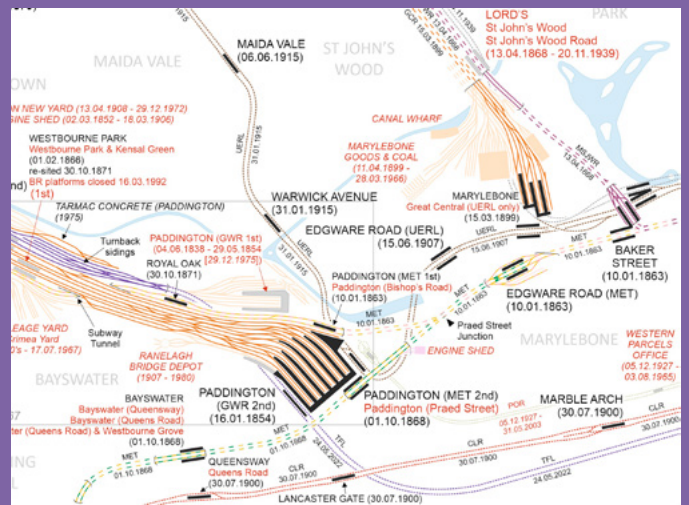
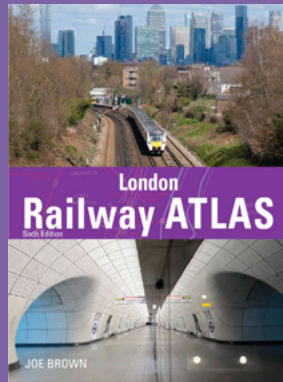
HAVE YOUR SAY: PCC POSTAL BALLOT

In July's *otm Pensioners' Edition* (issue 80, page 6), the Pension Consultative Council (PCC) sought nominations for councillors. They received more nominations

than positions in Section I (deferred and pensioners) and Section 2 (TfL employees). Because of this, and as you are represented by Section I, a ballot form will sent to your home address in October.



RAILMAPPER



With a keen interest in cartography, and a lifelong passion for the railway, TfL's Joe Brown has recently published his latest **London Railway Atlas**.

Joining as a Guard back in 1997, Joe went on to become a Train Operator, Duty Manager and Train

Operations Manager – before moving into Head Office roles.

Joe says: "My earliest memories are of District line trains passing my house, and I soon developed a fascination with railway history, as well as enjoying drawing maps. My first atlas came out 18 years ago, and this updated edition

records all railway infrastructure in London, past and present."

If you share Joe's interest for all things infrastructure, head to crecy.co.uk/london-railway-atlas now. Use **LON25** for a £2.50 reduction. Includes free postage and packaging to UK addresses only.

Piccadilly line trains put to the test



On 19 July 1975, Hatton Cross station opened on the Piccadilly line, completing the first phase of the extension that would ultimately serve Heathrow Airport. On that same day, the Piccadilly line 1973 stock was introduced, replacing its 1938 and 1959 trains.

Fast-forward to today, and the first of the 94 Siemens Mobility-

built new trains for TfL are at the test and validation centre in Wegberg-Wildenrath, Germany. The trains – spotted making their journey from the production line in Vienna – caused quite a stir amongst transport enthusiasts thanks to their modern design and fewer bogies.

You can expect to see the trains in London – for further testing

and integration – late next year, before they enter passenger service in 2025. The more accessible trains will include air-conditioned carriages, a smoother ride and improved capacity.

Half of the new trains will be assembled at Siemens Mobility's site in Goole, East Riding of Yorkshire.



Send us your Piccadilly line memories, transport tales or thoughts (with a photo or two) otmpensioners@tfl.gov.uk to be in with a chance of winning a prize. You can also post your letter to us (address details on back page).

otm

FONDLY REMEMBERED



Leslie 'Les' Albert Humphrey, 93, passed on 1 June 2023. Born in 1929, Les had a variety of jobs before joining London Transport (LT) in 1960 to drive the No. 76 out of Tottenham – his place of birth. He left LT in 1981 and moved to Downham Market, Norfolk. Les was married to Sue for 72 years and had been living in Olney, Bucks for the past 16.



Ron Shrimpton, 96, passed on 7 May 2023. Ron followed in his father's footsteps and began a career on the buses in January 1949. He worked for more than 40 years as a driver out of Walthamstow garage and, latterly, as a Mechanical Engineer at Tottenham garage. Ron enjoyed photography and model trains in his retirement. A loving and proud family man, Ron leaves his wife of 69 years (whom he met when she was his 'clippie' at Walthamstow), six children and 13 grandchildren and great-grandchildren.



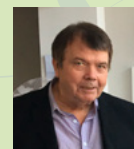
Mohan Sehmi, 91, passed on 14 October 2022. Mohan had a passion for railways and started on the Piccadilly line in the 1970s, progressing to Ballast Guard on trains out of Lilly Bridge depot. He spent more than 20 years working the night shift and became a member of the London Transport Corps of St John Ambulance. The last 10 years of Mohan's life were largely defined by mild Alzheimer's, yet he continued to enjoy walking, reading and the company of friends and family.



Leroy Yarde, 88, passed on 2 December 2022. Leroy emigrated from Barbados to London in January 1962 to work for London Transport as a 'Station Man'. He worked at Wembley and then for many years at Earl's Court as a signaller on the Piccadilly line. Leroy retired in September 1993 after 31 years with London Transport.



Wallace 'Wally' Buck, 86, passed on 3 July 2023. Following in his father's footsteps, Wally joined London Transport as a guardsman in 1951, progressing to the youngest driver of the time, a role which he enjoyed for 25 years. One of his proudest moments and memories was being the first driver to take a train out of Rickmansworth Metropolitan station – a story which he fondly told on many occasions. Wally rests in peace with wife Rosemary, and is deeply missed by his three sons and six grandchildren.



Cliff Brittan, 74, passed on 31 May 2023. Throughout his life, Cliff worked as a booking clerk on the London Underground, clocking up an incredible 44 years. He worked at various stations before being rostered at Covent Garden until his retirement. He genuinely loved his job on the Underground. Cliff enjoyed spending time with his family, and leaves behind a beloved wife, children and grandchildren. He will be sorely missed.

Send a paragraph along with a photo of someone who has passed ✉ otmpensioners@tfl.gov.uk

CODEBREAKER

It's become quite the norm to get 'change your password' warnings these days, and for good reason; too many leave themselves open to scammers.

Let's face it, while our pet's name might be easy to remember, it's equally simple for a crook to guess (even with a 123! after it).

Choosing strong passwords – and managing them well – is important.

Here's a Cyber Security TRUE or FALSE for you:

GrinningSkydivingOtter is a stronger password than GR!NnInG123!

It's true. GrinningSkydivingOtter could be cracked in 24 years, whereas GR!NnInG123! would take about 11.5 minutes. Change it to GrinningSkydivingOtter£33 and it'd take a whopping 24 MILLION years. The magic of three random words!

Don't give scammers an easy job; choose your password well.



LETTERS



The worthy winner of this edition's letters page is Eric Green from Ware, Herts. We loved reading about Eric's memories, and he wins a goody bag for sharing them with us.

Dear otm,

Looking at the photo of King Charles III's Coronation, it takes me back to our late

Queen's Coronation on 2nd June 1953.

I was working as a signal box boy at South Kensington station – on early turn. This was from where I was able to watch the Silver Bullet go by. The first, and only, unpainted train. It was on the District line to Westminster station carrying all the Lords and Ladies.

They were standing in their crowns, robes and tiaras. They were all 'strap-hanging', as I don't think they could sit due to their robes on the seats. The weather was cloudy, but that didn't dampen the spirits of the crowds.

I went on to become a guard-motorman at New Cross depot, Barking to Drayton Park and ATO at Seven Sisters station. The best years of my life!

Eric Green (86)



Send us your memories, transport tales or thoughts (with a photo or two)

✉ otmpensioners@tfl.gov.uk to be in with a chance of winning a prize. You can also post your letter to us (address details on back page). Get writing now!

10% OFF*
BASE PREMIUM
Quote code: OTM10

Travel Insurance
Medical conditions? No Problem!

We do medical screening differently. Give us a try, you could get a better price!

- + Cover for all types of conditions
- + No upper age limit

Call free:
0808 175 6418
totaltravelprotection.com

Total Travel Protection

Total Travel Protection is a trading name of Ancile Insurance Group Limited. Authorised & Regulated by the Financial Conduct Authority No. 471641. *Discount applies to base premium only and not to any medical screening premiums or optional extras. Discount valid until 31st December 2023.

AN APPEAL BY THE LTSA

The Association needs your support. Due to health issues, we've lost 50 per cent of the elected management committee. The lack of a fully functional committee will ultimately lead to the LTSA's demise.

The LTRSA has already folded and, without the LTSA, the LTPA will face the same catastrophic fate, reducing member representation on the Pensioner's Forum from the original 12, to just eight PCC Section 1 elected members.

As a reminder, the Membership fought –

and won – in the High Court in 1989 for the Membership to have a voice that could be heard at the Pension Fund Trustee Board level, and in the current financial climate, we must not lose it.

If you can help, please contact me.

✉ valdexia68gmail.com

☎ 01273 412011

📞 07880 714967

Thank you.

Sandi Barnes
Chairman, LTSA

PENSIONERS' FORUM SUMMARY

Meeting held on Thursday 7 September 2023.

Further communications between Government and TfL regarding the Pensions Review can be accessed via the TfL Pension Fund web site at:

cutt.ly/pensionsreview

Pensioner representatives wrote to TfL seeking full engagement in any options for change that are developed, and consultation on any proposals that arise. TfL has agreed engagement will take place through the Pensioners' Forum. We will provide updates to members as matters progress.

Discussions continue between TfL and the Rail Delivery Group regarding Rail Staff Travel online access.

The outcome of these discussions will mean privilege ticket holders (with access to the internet) will be able to purchase tickets and book seats online. Complexities mean it may take some time to finalise the arrangements. In the meantime, guidance will be set out in the next edition of otm PE around what to do if there is no ticket office open when you need to purchase privilege tickets.

Improvements have been implemented to enhance the member experience when contacting the TfL Pension Fund.

A new triage service has been introduced increasing the level of resources, and an improved telephony system. You can contact the Pension Fund via email

✉ helpdesk@tflpensions.co.uk or by 'phone on the new (single) number **01737 235298**.

The Annual Members Meeting will take place at One Great George Street, London SW1, on Friday 6 October 2023, or remotely via the internet. Full details will be included in the Annual Review and PensionNews, both of which will be sent out to all members in September.

CONTACT DETAILS

PENSION FUND

The TfL Pension Fund Office team are always pleased to help with your questions. Choose from the following options to get in touch.

Email

✉ helpdesk@tflpensions.co.uk

Submit an enquiry (if registered) via the Pensions Web Portal

🌐 pensions.tfl.gov.uk

Post* 📮 4th Floor,
200 Buckingham Palace Road
London
SW1W 9TJ

Call

☎ **01737 235298**

*With effect from 9 October, the Fund Office address will be:
8th Floor, Palestra
197 Blackfriars Road
London
SE1 8NJ

STAFF TRAVEL

📮 Floor I, 14 Pier Walk
London
SE10 0ES

☎ **0800 015 5071**

✉ I729Helpdesk@tfl.gov.uk

HOSPITAL SATURDAY FUND

☎ **020 7928 6662**

TRANSPORT BENEVOLENT FUND & STAFF WELFARE FUND

☎ **0300 333 2000**

TRANSPORT FRIENDLY SOCIETY

☎ **020 7833 2616**

TAX QUERIES – HMRC

0300 200 3300 (quote ref 083/LT7 and your NI number)

OTM PE MAGAZINE

📮 IIG5 Palestra
197 Blackfriars Road
London

SE1 8NJ

✉ otmpensioners@tfl.gov.uk

Opinions and views expressed in this magazine (including within advertisements) don't necessarily represent the views of TfL or the editorial team. All rights reserved. No part of this magazine may be copied or reproduced in any form, including photocopying, without consent of the copyright holder. Information regarding advertising – including policies and relevant terms and conditions – may be obtained by emailing otmpensioners@tfl.gov.uk

PENSION PAYMENTS

Payments will be made – in advance – directly into your bank / building society account on: **25 September, 23 October, 20 November and 18 December**. More info / future dates: 🌐 cutt.ly/pensionpayments