



PENSIONERS' EDITION

New bus is a step closer

Six bus manufacturers have been chosen to bid for the contract to design and build the new bus for London.

Some of the key features they have been asked to include in their proposed designs and costs include:

- an open platform at the back, echoing the Routemaster design, but with options for

the platform to be closed if necessary

- fewer emissions that are harmful to the environment
- accessibility requirements.

The contract is due to be awarded at the end of this year, with the first bus sporting the new design in service from 2011.

It's 50 years this year since the first production-built Routemaster buses went into regular service

Frederick hits 100

A former bus driver and engineer has celebrated his 100th birthday with friends and family.

Frederick Doncaster joined London Transport after serving in the Army and the Royal Air Force. When he retired, Frederick went to live in Skegness with his wife Kit, and 30 years ago he moved to Caddington near Luton.

It was there he met current carers Hilda and Brian Phillips,



who now visit him up to four times a day.

Brian said: "Frederick often talks about his time driving

buses in London and working at Lillie Bridge depot. He's very proud of his time with LT."



JUBILEE JOURNEY

The Jubilee line celebrates 30 years, and 10 years of the line's extension, this year.

- Turn to page 5 for our pictorial trip down memory lane.

Call for PCC nominations

Nominations are being sought for TfL Pension Fund members to stand for election to the TfL Pension Consultative Council (PCC).

Five representatives need to be selected to replace those due to retire on 30 November 2009 under the PCC's constitution.

The representatives due to retire are Linda Arwood and Vic Lane from Section One (representing pensioners and deferred pensioners), Ian Kierans from Section Two (representing employees of TfL, its subsidiaries or contractors) and Mark Harding and John Robson from Section Three (representing employees of London Underground, its subsidiaries or contractors).

Any TfL Pension Fund member may nominate another member as a candidate for election or re-election to the section that represents them both. Retiring representatives can also be nominated.

Nominations must be made in writing by a member of the same section as the nominee. Each nomination must be countersigned by another Fund member also represented by the same section. The information listed below and a personal statement of up to 100 words, including the reason for standing for election or re-election to the PCC, must accompany the nomination:

- name, as nominee wishes it to appear on the ballot paper
- dates, if nominee has previously held office as a councillor
- state whether pensioner or deferred pensioner, if from Section One.

A passport-sized photograph may also be provided for inclusion in voting papers.

Please note that the information provided must be factual, appropriate and inoffensive.

Completed nominations must be sent to the PCC Secretary Sarah Pascall, TfL Pensions Directorate, 4th Floor, Wing Over Station, London SW1H 0BD by Friday 14 August 2009. Copies of the PCC constitution are also available from the same address.

If there are more nominations than vacancies, elections will be held by postal ballot among Fund members in the relevant sections.

Pensioner Forum update

Items discussed at the latest Pensioner Forum on 11 May 2009 included:

- Meeting Chair Martin Boots, Head of Employee Relations and HR Policy, reported that concerns received from Pensioner Representatives on behalf of pensioners with regard to the 2008 Christmas card had been passed to Steve Allen, TfL's MD Finance, to raise at a meeting with the Transport Commissioner.
- Pensioner Liaison Manager Yvonne Kerchhoff said that more pensioner liaison reps (PLRs) are needed to fill positions vacated by those who have been reps for a long time. Feedback from reps showed they feel there is now much more support available to them and they feel part of a recognised and valued scheme.
- Head of Pensions Stephen Field reported that, as of 30 April 2009, 612 pensioners and 129 deferred members had registered for member self-service on the Pension Fund website. This allows pensioners to view payslips online and make changes to their account, such as address details.
- The preliminary results of the 2009 actuarial valuation of the Pension Fund are not expected until November 2009.

Open to question

All TfL Pension Fund members are invited to attend the Annual Members' Meeting on 13 October 2009.

The meeting will start at 11.00 at One Great George Street, London SW1P 3AA.

Please bring some identification with you, such as a staff pass or privilege ticket authority card. You will need to show this on arrival.

You will be able to ask questions on the day. If you can't attend but would still like to submit a question, you can send it to the Trustees to be answered as soon as possible after the meeting.

Submit your questions to the Head of Pensions and Fund Secretary, 4th Floor, Wing Over Station, 55 Broadway, London SW1H 0BD or by email to: helpdesk@tflpensionfund.co.uk

News from the LTRSA

There was a higher turnout than previous years for the 2009 London Transport Retired Staff Association (LTRSA) annual general meeting on 11 May.

Members enjoyed a presentation from Chris Godbold of the Transport Benevolent Fund (TBF), who talked about what the Fund can offer and how to join. Chris stayed to help answer questions with the LTRSA committee in a Q&A session.

A Pensioner Liaison Representative (PLR) was also on hand to talk about what the role entails and how pensioners can benefit.

People at the meeting heard about the social activities available to LTRSA members from Doreen Murphy and George Allen. There are two holidays a year – a group has just returned from Italy – together with several day coach trips.

HOW TO JOIN

Membership of the LTRSA is open to any former LT or TfL employee for a one-off payment of £5. Please contact George Allen on 01726 815707 if you'd like more information.

PLRs SHARE VIEWS AND IDEAS

The latest Pensioner Liaison Representative (PLR) meeting was held at 55 Broadway on 19 March 2009.

It was well attended by current and prospective reps, who enjoyed the chance to meet with experienced reps.

Two new reps have signed up in the last month, and we are always looking to appoint in most areas.

The next meeting in London will be on 21 August from 14.00 on the 10th floor at 55 Broadway. If you are a member considering becoming a rep in your area, and you can attend the meeting, please phone me to let me know. The number is 0800 015 5074 (free phone in UK only).

Yvonne Kerchhoff
Pensioner Liaison Manager

CONTACT DETAILS FOR PENSIONER ENQUIRIES

TfL Pension Fund
020 7918 3733

Staff Travel
0800 015 5073

Pensioner Liaison
0800 015 5074

Hospital Saturday Fund
020 7928 6662

Hospital Savings Association
01264 353211

Simply Health
0800 072 6719

Transport Benevolent Fund
08450 100 500

Transport Friendly Society
020 7240 8886

Tax queries –
HM Inspector of Taxes
0845 300 3939 (quote ref
083/LT7 and your National
Insurance number)

We're always keen to hear from you.
Send your news, story ideas and letters to:

otm pensioners' edition
Lisa Mobley
AB Publishing
24-26 Great Suffolk Street
London SE1 0UE

Email: otm@abcomm.co.uk
Telephone: 020 7922 5670

The opinions and views expressed in the advertisements in this magazine are in no way those of London Underground Ltd or Transport for London. The opinions expressed in this magazine do not necessarily represent the views of London Underground or the editorial team. All rights reserved. No part of this magazine may be copied or produced in any form, including photocopying, without the consent of the holder of the copyright. Advertisements or other inserted material are accepted subject to the approval of the publishers and their current terms and conditions.

The publishers will accept an advertisement or other inserted material only on the condition that the advertiser warrants that the advertisement does not in any way infringe copyright or contravene the provisions of the Trade Descriptions Act. All copy is subject to the approval of the publishers, who reserve the right to refuse, amend, withdraw, or otherwise deal with advertisements submitted to them at their absolute discretion and without explanation. All advertisements must comply with the British Code of Advertising Practice.

Richard takes the helm

Richard Parry has been appointed interim managing director of London Underground following Tim O'Toole's decision to return to the USA, pending a permanent appointment to replace him.

Richard joined LU in 1992 from British Airports Authority (BAA).

Before his appointment as managing director, he was director of strategy and service development, responsible for LU's strategy and for improving the service and communications.

Richard said: "I will be working with the director team to build from the platform Tim has established.

LU TOPS THE TREE

London Underground beat competition from the likes of Madrid and Barcelona to win the Best Metro Europe title at the 2009 'Metros' awards.

"I know from the support I have already received from so many people across the business, that we are all determined to sustain the progress we have made."

Tim said: "It is painful to leave, just when the biggest presents of all, such as the upgrade work coming to fruition and the Olympic and Paralympic Games, are about to be unwrapped.

"I'm proud to be associated with London Underground and the people who make it what it is."



Stepping up accessibility in central London

Green Park will be transformed into a fully accessible station in time for the 2012 Olympic and Paralympic Games.

It will be the only central London station with completely step-free access from street to platform within the boundary of the Circle line.

Three new lifts will be built, together with direct access to and from the park via a ramp. The work will also include a bigger Piccadilly south side entrance.

The lifts are due for completion in 2011. Other upgrades include contrasting handrails and tactile flooring on platforms to benefit partially sighted customers.



Step-free station: an artist's impression of the new-look Green Park, with direct access from the park.

A useful i-dea

All London buses are now fitted with iBus, a state-of-the-art system that gives passengers information about the route.

There are audible and visual 'next stop' announcements telling passengers not only what the next stop is, but also the final destination of the bus. This means people can feel confident they won't miss their stop, even on an unfamiliar route.

Carol Thomas, Access and Inclusion Manager for Guide Dogs (formerly the Guide Dogs for the Blind Association), said: "The audible announcements give our members the confidence to use

the bus network, which is invaluable as it gives them so much more independence. We applaud TfL for leading the way in introducing such announcements on buses and we are campaigning for similar announcements on buses across the UK."

iBus uses a combination of technologies, including satellite tracking, to pinpoint the exact location of all 8,000 London buses, and also provides more accurate information for the Countdown arrival time indicators at bus stops.

LIGHT RELIEF

New light emitting diode (LED) lighting at all roadside bus ticket machines is helping to save energy while making the machines easier to use.

LED lighting is brighter than the previous lighting and lasts longer. The technology uses up to 75 per cent less energy than conventional lighting and will reduce CO₂ emissions by the equivalent weight of 10 double-decker buses every year.



PLR Jean helps to reunite couple



Helping hand: Jean Hillard came to the rescue.

Pensioner Liaison Representative (PLR) Jean Hillard came to the aid of a married couple who ended up in different care homes and hadn't seen each other for three years.

Jean became a PLR in Stevenage, Hertfordshire, 10 months ago. Her very first visit was to a London Transport pensioner in a care home. Because his wife has Alzheimer's disease, they were placed in different accommodation. Jean was his first visitor in three years, so he had no one to ask about

the possibility of visiting his wife.

Jean called Yvonne Kerchhoff, who manages the PLR scheme, for advice.

Yvonne said: "I contacted Age Concern, and their advocates visited the husband and wife separately to assess their needs. At first, the wife's care home was reluctant, but both husband and wife were desperate to see each other, so they agreed to a visit.

Funding challenge

"Our next challenge was funding a visit, but through my contacts I found out about a community transport scheme in Stevenage that would take the pensioner to see his wife for just £1.20 each way."

The couple have now seen each other

several times and, thanks to contact from Yvonne, the Elderly Accommodation Council is looking into potential homes that could suit the needs of both the husband and wife so they can be together.

Yvonne said: "Jean is 78 and thought she might be too old to become a PLR, but she's proved that wrong! She looks after just 16 pensioners as she can only visit people in her immediate area, but this case is proof that even one visit from a PLR can make a huge difference to someone's life."

■ If you'd like more information about becoming a PLR, contact Yvonne on 0800 015 5074.

ADVERTISEMENT

Goodbye bathing difficulty: now even more affordable

with an easy entry shower from Bathing Solutions.

SUMMER SALE

UP TO **25% OFF** selected showers



The Elegance – our most popular easy entry shower

✓ Ideal if getting in or out of a bath is difficult

✓ Anti-slip shower tray

✓ The biggest range of easy entry showers available

✓ Low threshold trays

✓ Fold-up seat for added comfort

✓ Fully guaranteed



The Marquis – a bath size shower with full width sliding doors





The Finesse – offers stylish design with the convenience of no-door easy entry

Say Hello to showering comfort when you replace your old, uncomfortable bath with one of our superb easy entry showers.

For a brochure or to arrange for a free, no-obligation survey and quotation, call free on

0800 783 1912

PLEASE QUOTE OFFER REFERENCE OMSS79

Please send me a brochure on your range of easy entry showers and walk-in baths, or telephone me to make an appointment for a free, no-obligation survey. OMSS79

Name _____

Tel No. _____

Address _____

Postcode _____

Bathing Solutions and other group companies may send you information and offers in the future. Please tick box if you do not wish to receive information from us or third parties in the future.



Post coupon to: Bathing Solutions, FREEPOST SWC3136, Ledbury, HR8 2ZZ

Jubilee jubilations

The Jubilee line celebrates its 30th anniversary this year, and 10 years of the Jubilee line extension.

Each station group on the line is holding an anniversary charity event to raise money for a local cause of their choice. Wembley Park and Stratford groups have

held theirs already, raising nearly £3,000 between them.

Here, we round up some photos from around the line over the last three decades.



On line: 1972 Tube stock en route to Charing Cross in 1980.



Canary construction: Canary Wharf station being built in 1998.



Ground work: construction work for the line along Oxford Street in June 1972.



Testing time: development engineers testing electronics equipment on a 1967 Tube stock car before it's used on the Jubilee line.



By royal appointment: Prince Charles rides in the first Jubilee line cab at Green Park on the launch day on 30 April 1979.



Platform scene: Sherlock Holmes' short story *Charles Augustus Milverton* on display at the Jubilee line platform at Baker Street.

Star status for Norwood couples

Norwood Garage made the national papers in the 1950s for the highest number of married couples at any London Transport garage.

Reader Harry Shaw and his wife were one of seven couples at the site. Harry said: "LT's recruitment campaign at the time was about 'Togetherness', so the married couples theme fitted perfectly. We were all given a day's paid leave to take part in a photo shoot for the papers.

"I was a spare driver and my wife was a spare conductress, so we worked together. Unfortunately we lost touch with the other couples over the years as I moved to Elmers End



and my wife moved to 55 Broadway."

Harry thinks his site held the record, but if you know different, let us know!

Partners on parade: (from left) Mr & Mrs Jim Cooling, Mr & Mrs Charles Clover, Mr & Mrs Harry Murley, Mr & Mrs Jim Regan, Mr & Mrs Tommy Thompson, Mr & Mrs Don Hillman and Mr & Mrs Harry Shaw.

FONDLY REMEMBERED**SIR MALCOLM BATES****30 May 2009, aged 74**

Sir Malcolm was a past chairman of London Transport.

JOHN BOWTLE**25 April 2009, aged 80**

John joined LT in 1949 and recorded 44 years' service. He retired in 1994 as a senior traffic regulator at Leytonstone station.

MAURICE W BROWN**14 February 2009, aged 84**

Maurice started work with the Chief Signal and Electrical Engineers in the Estimating Section from 1963 to 1987.

ERIC HERBERT BURGESS**8 August 2008, aged 83**

Eric worked for LT in the engineering department, Chiswick, for 40 years until he retired in 1987.

ALBERT (JIM) COZENS**6 April 2009, aged around 86**

Jim worked in the Welfare Department and, after retiring, was a member of the LT Superannuitants' Association, the LT Pensioners' Association and the Pensioners' Forum. His interests included the arts.

ALFRED (ALFIE) GOULDER**22 March 2009, aged 80**

Alfie was at Chiswick Works for more than 39 years until he retired in 1984.

SYD HARDY**9 June 2009, aged 86**

Syd retired as the LT Chief Architect.

EDWARD (TED) LAIRD**27 May 2009, aged 87**

Ted joined as an apprentice in 1938 and progressed to permanent way engineer, before retiring as personnel manager. He worked for LT for 43 years.

DENNIS LEE**8 September 2007, aged 79**

Dennis worked as a driver at Neasden depot for 40 years.

FREDERICK (TED) LOCK**July 2008, aged 96**

Ted joined as a conductor in 1946 at Dalston Garage. He went on to become a driver and joined the sports office at Camberwell as a sports officer, progressing to general secretary of the association. He retired in 1966.

ERIC NOQUET**24 April 2009, aged 85**

Eric worked as a bus conductor and counter clerk at Kingston and Norbiton bus garages for 40 years.

JIM PEACH**15 April 2009, aged 87**

Jim was a Metropolitan line leave cover clerk based at Baker Street.

DENNIS STAPLES**26 October 2008, aged 81**

Dennis joined in 1948 as a conductor. He went on to become a driver and a gold badge inspector. During his 38-year service, he worked at Holloway, Cricklewood, Hendon and Harrow Weald Garages.

FRANK TUNBRIDGE**1 June 2009, aged 74**

Frank was a member of the LT Estates Department.

ALBERT (BUSTER) HOWARD WHEELER**10 October 2008, aged 88**

Albert worked at Hendon bus garage as a driver on the 113 route for 38 years.

Recalling our wartime role



Wartime heroine: Georgina Porter represented LT at the Remembrance Day service at the Cenotaph.

Last issue, we ran an obituary for Georgina Porter, who passed away late last year.

Georgina was a member of the London Transport Old Comrades' Association. She was one of the 16,500 clippies (conductors) employed during World War Two to replace LT busmen who had joined the services.

LT and its predecessor, London General, played a huge role in wartime Britain, from keeping jobs open for men who went to serve their country, to bus staff taking troops to the front line in World War One on board their trusty B-type buses and bringing the wounded back, and again transporting troops to their posts at the start of World War Two and helping with the movement of evacuees away from London.

During World War Two, LT also converted 477 Green Line Coaches for use as ambulances, assisted with the overhaul of Rolls-Royce engines for RAF fighter

planes and co-ordinated the production of 710 Halifax four-engined bombers, with both Chiswick Works and premises at Aldenham, later developed further as the bus works, heavily involved. LT has an official representative at the Remembrance Day service at the Cenotaph each year in recognition – a role Georgina herself carried out in November 2000.

Prompted by this, and the 65th anniversary of the D-Day landings in June 2009, we'd like to hear your wartime recollections and anecdotes. If you weren't an LT employee during the war but have heard about LT's involvement and would like us to look into a particular area, please also let us know.

Please email otm@abcomm.co.uk or write to *otm* pensioners' edition, 24-26 Great Suffolk Street, London SE1 0UE. We can't promise to include every contribution, but we'll run a selection in a future issue.

Financial advice at hand

The Financial Services Authority (FSA) has launched a range of *Money Made Clear* guides available online and in booklet form. There are guides to everyday money issues such as borrowing and insurance, and a host of guides on pension and retirement issues, such as equity release schemes, yearly pension statements and managing money in retirement. Log on to www.moneymadeclear.fsa.gov.uk for the online guides or call 0300 500 5000 (calls should cost no more than a standard 01 or 02 prefix UK-wide call and are included if you have inclusive landline or mobile minutes).

Double discount for railcard holders

If you're eligible for a Disabled Persons Railcard, you can enjoy a third off most UK rail fares. Not only that, but if the card holder travels with an adult companion, they benefit from the same discount for that journey. The railcard costs £18 a year, or £48 for a three-year card. Check your eligibility or find out more at www.disabledpersons-railcard.co.uk or call 0845 605 0525 (minicom/textphone 0845 601 0132).

Upgrade updates

Find out which lines and stations are closed for upgrade work by logging on to www.tfl.gov.uk/check for the latest planned closures. If you don't have internet access, you can call 020 7222 1234, or textphone 020 7918 3015.

Calling all Aldenham workers

All former Aldenham Works staff, plus other halves and friends, are welcome to join this year's Aldenham Works reunion. It's likely to take place in September, but the date and venue are yet to be confirmed. Please contact Fred Pearson on 020 8428 2309 nearer the time if you'd like to go.

More PTAC news online

Following last issue's article stating that Privilege Ticket Authority Card (PTAC) restrictions are now on the Pension Fund website, Staff Travel is looking at ways to make the documentation more widely available for retired employees. We are looking at including application forms and up-to-date information on the travel facilities available to you, including those for people with National Rail PTACs. Keep an eye on the website for more information soon.

ADVERTISEMENT



RCH



Convalescent Centre It's time to unwind... Convalescent and Respite Care

In taking a convalescent break with RCH, we are confident that being in a peaceful and tranquil environment will bring benefits to our guests and help them to regain their strength and well-being.

You will be assured of a warm and friendly welcome from our staff, enjoy high class accommodation with en-suite facilities in all rooms, good food, a licensed bar, lift to all floors and recreational facilities on hand.

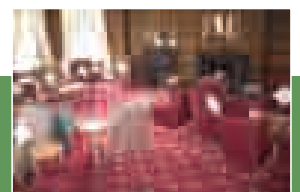
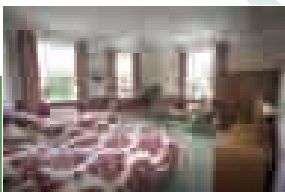
Bridge House in Dawlish is set in beautifully landscaped gardens, provides adequate car parking and is close to the town and railway station.

So come along... relax, and take it easy. You can do as much, or as little as you want and it will be a break you'll always remember.

For further details and booking information call our dedicated team on

01626 866850 - www.rch.org.uk

And remember, there are additional concessionary benefits for RCH contributors



FREQUENTLY ASKED QUESTIONS

We'll be running a selection of the most frequently asked questions to the Pension Fund office – it might save you a call!

Q. My tax changes minimally every few months, but I do not receive a change of net pension payslip.

Tax is calculated on whole pounds and not the remaining pence. Therefore, every few months there will potentially be a change in the tax of around 20 pence. You are only sent a payslip when your net pay changes by £5 or more. However, you can access your four-weekly payslip online by registering for member self-service on the Pension Fund website at www.tflpensionfund.co.uk

Q. I have not received confirmation that my new bank account or address has been changed.

All changes of bank account details are acknowledged in writing by the Fund Office. Due to the large volume of post received, we do not acknowledge changes of address. However, you can now change your address online by registering for our Member Self-Service facility via our website at www.tflpensionfund.co.uk

You can also view all your four-weekly payslips – not just your annual payslip or any issued because your net pay has changed by more than £5.

For security reasons, we regret that we can only accept changes of bank details in writing.

Have Your Say



Thank you to everyone who has sent us a letter. We do read them all, but due to limited space we are only able to publish a selection each time. If you would like to write to us or raise an issue, send your letters to: *otm* pensioners' letters, AB Publishing, 24-26 Great Suffolk Street, London SE1 0UE, or email otm@abcomm.co.uk, marking your email *otm* pensioners' edition. We look forward to hearing from you.

Assault policy a passing fad?

I am a retired member of staff who saw many assaults on staff and police, most completely ignored by LT.

How good to read in *otm* (staff edition May 2009) that passengers who assault/abuse station staff may at last be prosecuted.

I hope this is a genuine policy to be implemented by all group station managers and station supervisors, and not a passing fad. Older and retired staff will take this new 'policy' with a large pinch of salt. Not so long ago, we were told that the odd assault and all verbal abuse was part of the job.

PJ Leahy

Dear Mr Leahy,
In the past, prosecutions did take place but they weren't widely publicised.

The concerns you raise were some of those that led to the formation of a joint London Underground/British Transport Police Workplace Violence Unit (WVU) in 2006.

The WVU aims to improve both the level and standard of staff assault investigation, provide care to victims and ensure more cases are successfully prosecuted.

It tracks cases from start to finish and provides regular information on positive case results through a monthly newsletter.

In 2006/07 (the WVU's first year), there were 263 prosecutions, and the results were 80 per cent positive.

Our focus is on treating workplace violence as a serious issue, with action at all levels: the individual, the work

team and the organisation itself. It is no longer something for front line staff to have to deal with on their own, and violence against staff is never considered acceptable.

Aidan Harris,
Workplace Violence Unit
Manager

Freds reunited

My father, Fred Robinson, who is 83, would like to find his workmate Fred Haydon.

My dad worked on the Northern line from 1948 and the Victoria line before it opened, from 1967, until his retirement in 1991. Fred Haydon also worked on both these lines.

Please email chrisandpaul2@tiscali.co.uk or write to *otm* (address at top of page) if you can help.

Paul Robinson

Contribution confusion

I am a contributing member of the Railway Convalescent Homes (RCH), paying full subscriptions for more than 40 years. I was informed that, as I retired early from London Underground in 1998 aged 51 and after paying for more than 30 years, I was not eligible for free convalescence, only a reduction of £40.

The cost amounts to hundreds of pounds I cannot afford. I understand that if I was still working and contributing, the stay would be free. Why was I not informed when I retired in 1998 after paying in for more than 30 years? Am I entitled to a refund for the waste of money over the last 10 years?

I have spoken to many people in the same position and they too are totally unaware of these rules.

Allen Wilkinson

Dear Allen,

The original ethos of the RCH was to provide free convalescence to assist working railway staff to return to work after illness.

It was later decided to introduce a discounted rate for retired British Rail or London Transport personnel.

As a further concession, contributors who pay into the RCH scheme and who are retired are also entitled to a £40 discount of a convalescent stay annually.

The board will continue to look at the arrangements in light of the points you raise.

RCH Board of Trustees